



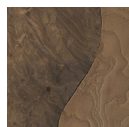
EVERY CUT OF WOOD TELLS A STORY

Following heavy storms, our artisan partners in Mexico search the forest for fallen trees of Mexican ash, salvaging as many as they can. Each log is oyster-cut, arranged, and stained by hand, united with fragments of sustainably grown European ash burl to create incredible, mosaic-like surfaces. Bases crafted from naturally oxidized metal add the perfect contrast, together forming the rustic beauty of our remarkable Polanco Collection.

PRODUCT DETAILS

- + Handcrafted from oyster-cut fragments of salvaged Mexican ash and sustainably harvested European ash burl.
- + A hand-applied, reactive finish highlights the natural beauty and tonality of the wood. An acrylic lacquer is then applied for added protection.
- + Oyster-cut wood may display cracks and other organic features, including scorch marks, water stains, and natural graining, that will not affect the quality or performance of your piece.
- + Bases are crafted from steel panels left out in the elements to weather, developing a rich patina of dimples and speckles as they age.
- + This collection is artisan-crafted from natural materials with hand-applied finishes. Individual pieces may vary in color, pattern, shape, and texture, making each truly unique.
- + Keep your furniture looking its best. Visit arhaus.com or speak to any Arhaus Design Consultant for care recommendations.

FINISH:



Ostra/
Brunido

NEED HELP?

Visit a store, call **866.427.4287**, or **live chat** with our Design Team to learn more.



COFFEE TABLE

56" w x 36" d x 16" h; *weighs 214 lbs.*
35POL56RECCF

64" w x 36" d x 16" h; *weighs 224 lbs.*
35POLANCOCF

72" w x 36" d x 16" h; *weighs 234 lbs.*
35POL72RECCF



PLINTH COFFEE TABLE

56" w x 31" d x 15" h; *weighs 219 lbs.*
35POL56PRCCF

64" w x 31" d x 15" h; *weighs 230 lbs.*
35POL64PRCCF

72" w x 31" d x 15" h; *weighs 240 lbs.*
35POL72PRCCF



ROUND COFFEE TABLE

42" diameter x 16" high; *weighs 207 lbs.*
35POL42RNDCF

54" diameter x 16" high; *weighs 211 lbs.*
35POL54RD CF2



ROUND PLINTH COFFEE TABLE

42" diameter x 15" h; *weighs 118 lbs.*
35POL42PRNCF

54" diameter x 15" h; *weighs 150 lbs.*
35POL54PRNCF

POLANCO

OCCASIONAL COLLECTION | MADE IN MEXICO

ARHAUS®

your home



CONSOLE TABLE

60" w x 22" d x 28" h; *weighs 103 lbs.*
35POL60CN2

78" w x 22" d x 28" h; *weighs 108 lbs.*
35POLANCOCN



END TABLE

34" w x 20" d x 22" h; *weighs 104 lbs.*
35POLANCOEND



PLINTH END TABLE

24" w x 24" d x 22" h; *weighs 102 lbs.*
35POL24PLEN



ROUND PLINTH END TABLE

18" diameter x 22" h; *weighs 34 lbs.*
35POL18PRNEN